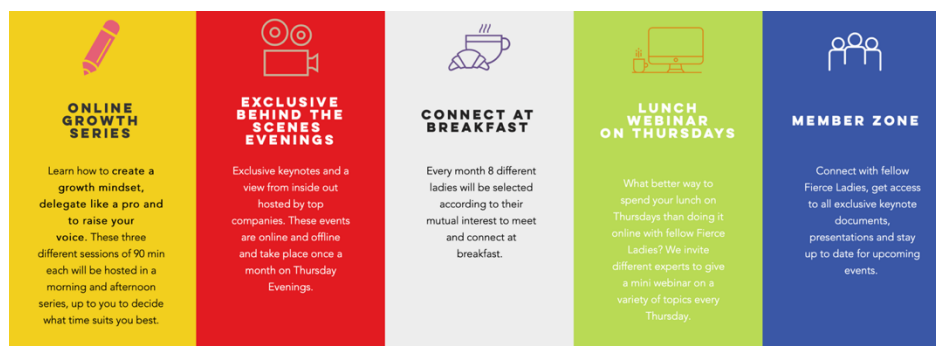




Fierce Ladies corporate partnership

Fierce Ladies is the accelerator for women with ambition. We develop untapped female potential, across company borders. Many organizations struggle to get more diversity in leadership roles. Joining the Fierce Ladies will help your team members to network, connect and grow faster.

At the Fierce Ladies tribe, we help women develop their full potential. Online growth series, exclusive behind the scenes events online & offline, tailormade networking breakfasts in small groups and mini webinars at lunch. You can actively support your female talent in developing their full potential and give them access to all our activities by becoming a corporate partner.



Your return as a corporate partner

1. Our signature series of 3 online workshops of 90 min. **‘3 Skills to develop your full potential’**, hosted by Elke Jeurissen, are accessible for all your selected team members.
2. Free access to all our activities for 12 months
 - Fierce Ladies Academy sessions, on/offline
 - Behind the Scenes events hosted by our partners offline OR Talks with female role models online
 - Exclusive membership to the Fierce Ladies member zone: build your network, get more visibility for your achievements, connect with members across sectors and regions, share questions with and get advice from other members, find a mentor

- Access to all Academy materials from previous sessions including topics such as networking, public speaking, negotiation skills, finance for dummies, design thinking, delegating like a pro, non-violent communications, etc.
- Access to the annual Fierce Ladies Members Celebration: meet other members, share, connect and grow, celebrate successes and get feedback on new growth plans

3. We highlight your company as a supporter of female leadership in all our communication channels.

Together, we will organize a **Behind the Scenes event at your organization OR host an online talk with leading women from your company on a topic of your choice.** The idea is to highlight your leaders, products, services, vision, whatever you prefer. Talks by female leaders from your company work well as do unique experiences. Let's discuss the best approach for your company.

We also do extensive storytelling about your partnership on all our social media channels and regular press articles. For example, read all about it in [this press article](#) our corporate partner Arvesta published recently.

4. Automated process for registrations for all activities

You have zero work in the registration process or follow up of events.

Once you sign a corporate hosting partnership, we will ask you for the list of women you would like to invite for our activities. All we need is their e-mail address. We will add them to our Fierce Ladies member zone, our intranet where members connect and register. You will receive the necessary communication tools (mailing template, social media materials) to send to all those employees to inform them about our partnership and to explain them how to register for our events.

Your investment

We expect you to actively support female leadership.

As part of the corporate hosting partnership and as a sign of your commitment to help realize our mission, we expect the following:

- As an individual Fierce Ladies member, your investment to join for 12 months is 960 euro excl. VAT
- As a small company corporate partner, you get 5 annual memberships for 5 of your female team members for the price of 4 memberships. Your total investment for a year is 3.840 euro excl. VAT
- As a large company corporate partner, you get 15 annual memberships for the price of 8 memberships. Your total investment for a year is 7.680 euro excl. VAT

Contact

Elke Jeurissen, Founder Fierce Ladies, welcome@elkejeurissen.com, 0476/505454
Check out our upcoming calendar on www.fierce-ladies.com